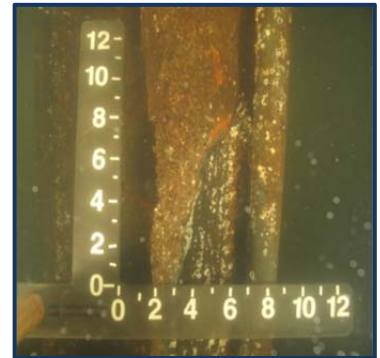


Naval Submarine Base New London

United States Navy



Project Type

Inspection
Structural Analysis
Design of Repairs
Construction Phase Services

Location

Groton, Connecticut

Estimated Construction Cost

\$63,000,000

Date of Service

2004 - 2012



Phone: 603-766-1870
Email: nelwood@appledoremarine.com
www.appledoremarine.com

Project Description

Naval Submarine Base New London is located on the east side of the Thames River in Groton, Connecticut and is home to more than 40 tenant commands including the submarines and crews of Submarine Group TWO, the faculty and students of the Submarine School, and the Naval Submarine Support Facility.

Appledore Marine Engineering, Inc. (AMEI) completed above and underwater inspections on the waterfront facilities at Naval Submarine Base New London in 2004 and 2011 as part of the Navy's Waterfront Facility Inspection Program. These inspections were completed over a 3 month period by teams of in-house engineer divers. The latest inspection documented numerous deficiencies and developed detailed construction repair cost estimates for \$63,000,000 in waterfront construction.

Following the inspections, AMEI was tasked with completing a variety of inspections and design work including emergency inspections, loading analysis, repair plans and specifications, permitting, and construction phase services.

AMEI has recently completed the waterfront facility inspection and load capacity study for Pier 8 and 33 and is currently providing construction phase services for the Waterfront Repairs for the Marginal Wharf and Repair of Piers 6, 8, 17, 33 and Construction at Quay 1A.

These detailed waterfront inspections have been the foundation for the Navy's planning code to roll out projects on the waterfront infrastructure.

Services Provided

- Inspection
- Design Plans and Specifications
- Structural Analysis
- Construction Phase Services
- Permitting